

# KADM

Ardmore Muni  
Ardmore, OK

10.00 mi NE of city N34 18.2324' W97 1.2358' Mag Var: 06E

## Nav aids:

Type:	ID:	Morse:	Frequency:	Radial:	Distance:
VORTAC	ADM	..- ..- ---	116.7	047	9 nm
DME	URH	..- ..- ....	114.3	305	38 nm

## Traffic Patterns:

No TPA reported. Assume 1,000 AGL.  
Left: 13,31,17,35

## Runways:

Name:	Dimensions:	Material:	Condition:	Treatment:
13/31	9002X150	concrete	good	no treatment
	<i>Trees; 2000' from end; 660' Left of center; 72' high; 25:1 clearance slope;</i>			
	<i>Trees; 2075' from end; 366' Left of center; 68' high; 27:1 clearance slope;</i>			
17/35	5404X100	asphalt	good	no treatment

## Tower:

Tower Hrs: 0700-2300 MON-FRI; 0700-1700 SAT-SUN  
Apch/Dep Ctl Svc Prvdd By Fort Worth Artcc (Zfw) On Freqs 124.75/323.0 (Ardmore Rcag).

## Lighting:

When Air Traffic Control Tower Clsd Actvt Mals Rwy 31 - CTAF. HIRL Rwy 13/31; MIRL Rwy 17/35 on Dusk-Dawn. Incr Intst - CTAF.

**Charts:** NACO: Dallas-Ft Worth Sectional

**Fees:** After Hours, GPU, Landing, Ramp, Tie Down

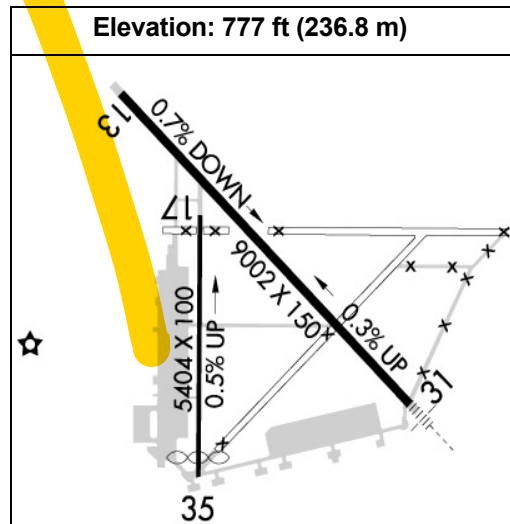
**Fuel:** 100LL Low-Lead, Jet A

**Phone:** 580-389-5238

**Weather:** 580-389-5078 (AWOS-3)

## Communication Freqs:

125.6 ATIS  
125.6 WX  
118.5 CTAF  
121.5 Emergency  
121.8 Ground Control  
118.5 Tower  
122.95 UNICOM



## Notes:

Year-round, Mon-Fri/0700-2300  
Year-round, Sat-Sun/0700-1700  
For Cd If Una to CTC on FSS Freq, CTC Fort Worth ARTCC at 817-858-7584.  
Airport Operated by Ardmore Development Authority 580-389-5238

## FBO's Summary:

### Small Business Aviation-The Line Shack

Phone: 580-389-5263; Freq: ARINC: 122.850; Hours: 01/01-12/31, Mon-Fri, 09:00-17:00;

## Other (Non-FBO) Businesses Summary:

### King Aerospace Commercial Corporation

Location: S  
Phone: 580-389-5505;